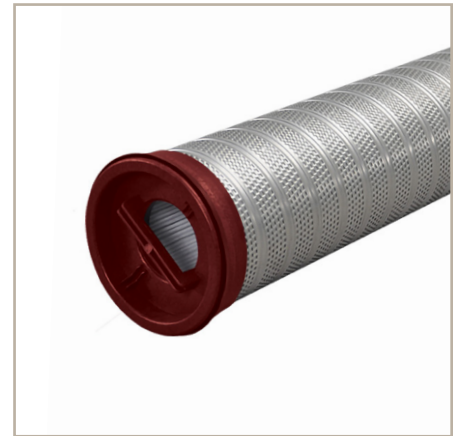


XtreamPure®

PLEATED, HIGH FLOW RATE STYLE LIQUID FILTER CARTRIDGES

Series XP-E

for use in PECO Series 55HX or 55VX XtreamPure® vessels or competitor vessels of similar design



The XtreamPure, Series XP-E, is a large 6" diameter cartridge designed to filter liquid from inside-to-outside. This design has several advantages. It allows for high flow rate capability within a single cartridge so fewer cartridges are needed compared to traditional 2.5" and 3" diameter designs. It keeps contaminants trapped within the cartridge, so the vessel remains clean. The cartridge includes a handled end cap with chevron seal technology to provide an absolute sealing of the cartridge to the basket support. This means there is no need for tools when sealing making it a safe, user-friendly choice while also reducing maintenance time and money.

The Series XP-E is built using a multi-layered w-pleat media design which keeps each pleat from folding on itself so that uniform contaminant loading throughout the pleat pack is achieved. The XP-E is made from polyester media with nylon end caps and includes a sturdy plated steel outer support to keep pleats from ballooning and getting lodged in the vessels' cartridge support baskets.

FEATURES	BENEFITS
W-Pleat Configuration	Optimizes dirt-holding capacity with more internal area and provides strength to pleat pack to prevent folding and blinding
High Strength Rigid Outer Support	Ideal for harsh conditions and demanding applications by increasing media integrity
Large Diameter (6") Cartridge	Yields higher flow rates and longer on-stream life than standard 2.5" filters, requiring use of fewer cartridges and cutting capital expenditure
Patented Chevron Seal	Ensures complete sealing compared to a standard O-ring seal, especially when support plate or baskets are out of round
Integrated Handle in End Cap	No tools required for cartridge change-outs yields simple and safe change-outs to reduce downtime
Inside-to-Outside Flow Direction	Contaminant captured inside cartridge provides cleaner and easier extraction during change-outs

APPLICATIONS
<ul style="list-style-type: none"> • Lube Oil • Chemicals & Solvents • Glycol • Coolant Applications



ENGINEERING YOUR SUCCESS.

MATERIALS

MEDIA	Multi-Layer Pleated Polyester
PLEAT PACK NETTING SUPPORT	Nylon
OUTER SUPPORT	Plated Steel
END CAPS	Nylon
SEAL	Buna-N (recommended), Viton® (optional)
ADHESIVE	Polyurethane

NOMINAL DIMENSIONS

SIZE	O.D.	I.D.	LENGTH
4	6.3" / 160mm	3.0" / 76mm	40" / 1016mm
6	6.3" / 160mm	3.0" / 76mm	60" / 1524mm

PERFORMANCE

MICRON RATING: 5, 10, 20, 40, 70, 100

EFFICIENCY: 99.98%

OPERATING DATA

FLOW DIRECTION: Inside-to-Outside

MAX. TEMP: 240°F / 115°C

MAX. DIFFERENTIAL PRESSURE: 50 psid / 3.4 bar

RECOMMENDED CHANGE-OUT

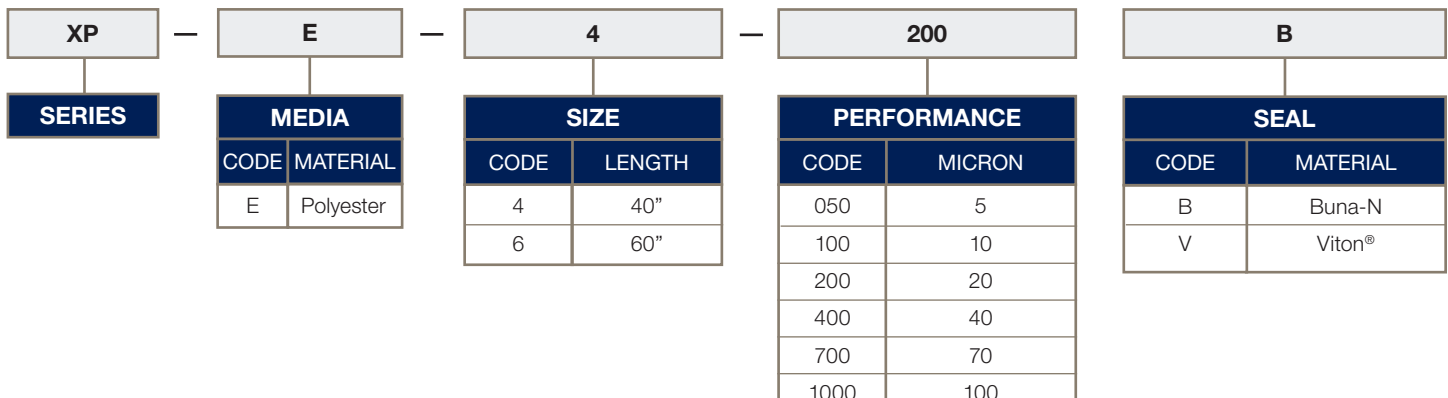
DIFFERENTIAL PRESSURE: 35 psid / 2.4 bar

PH RANGE: 3-9

RECOMMENDED FLOW RATE AT <2 PSID:

300 gpm per 60"L in 1 cP viscosity (10 micron & larger)

Consult factory for flow rate recommendations on less than 10 micron part numbers



**SCAN QR CODE FOR ADDITIONAL
PRODUCT INFORMATION INCLUDING
AVAILABLE PART NUMBERS**

For technical questions contact ipf.technical@support.parker.com or call 940-325-2575

To order, contact a support representative at ipf.support@support.parker.com or call 940-325-2575

Purchasing details: Request a quote at ipf.quotes@support.parker.com

Parker IPF Standard Terms & Conditions apply www.parker.com/IPF-Aftermarket-TOS

Protected by USA Patent No. 8,961,644.

Viton® is a registered trademark of E. I. du Pont de Numours and Company.

© 2023 Parker Hannifin Corporation
DS-XTREMPURE-XPE-230927



Parker Hannifin Corporation
Industrial Process Filtration Division
Phone 940-325-2575 | Toll Free 1-800-877-7326
Email IPF.technical@support.parker.com
www.parker.com/ipf